

EXTENSIVE GREEN ROOF DETAILS

- Plant Material
- Grauling Medium ZnCo Extensive, Depth 6-8 cm
- Filter Sheet ZnCo SF
- Drainage element ZnCo Floradrain® FD 25
- Moisture & Protection Mat ZCo SSM 45
- Root protected waterproofing
- Roof Construction

Notes:
When the waterproofing is not root protected an additional root barrier ZnCo HEF 40 is required between the membrane and the protection mat.
This detail is particular for the ZnCo Green Roof system to use. The roof construction and the waterproofing are not specified as they can vary.

System	System	Title	System
ZnCo	System Carpet	System Build-up	System
Flora	Flora	Flora	Flora
Flora	Flora	Flora	Flora
Flora	Flora	Flora	Flora

- Gravel Strip
- Inspection Chamber KS 5 / KS 8
- Roof Drain
- System build-up:
 - Roof Surface
 - Waterproofing Membrane
 - Moisture & Protection Mat ZCo SSM 45
 - Drainage element ZnCo Floradrain® FD 25
 - Filter Sheet ZnCo SF
 - Grauling Medium ZnCo Extensive, Depth 6-8 cm
 - Plant Material

Notes:
When the waterproofing is not root protected an additional root barrier ZnCo HEF 40 is required between the membrane and the protection mat.
This detail is particular for the ZnCo Green Roof system to use. The roof construction and the waterproofing are not specified as they can vary.

System	System	Title	System
ZnCo	System Green Roof	Roof drain with inspection chamber	System
Flora	Flora	Flora	Flora
Flora	Flora	Flora	Flora
Flora	Flora	Flora	Flora

- Coping
- Gravel Strip
- Separation Element ZnCo TP 75
- System build-up:
 - Roof Surface
 - Waterproofing Membrane
 - Moisture & Protection Mat ZCo SSM 45
 - Drainage element ZnCo Floradrain® FD 25
 - Filter Sheet ZnCo SF
 - Grauling Medium ZnCo Extensive, Depth 6-8 cm
 - Plant Material

Notes:
When the waterproofing is not root protected an additional root barrier ZnCo HEF 40 is required between the membrane and the protection mat.
This detail is particular for the ZnCo Green Roof system to use. The roof construction and the waterproofing are not specified as they can vary.

System	System	Title	System
ZnCo	System Green Roof	Flange with Gravel Strip	System
Flora	Flora	Flora	Flora
Flora	Flora	Flora	Flora
Flora	Flora	Flora	Flora

- Coping
- Gravel Strip
- Separation element ZnCo DP 80 or DP 120
- System build-up:
 - Roof Surface
 - Waterproofing Membrane
 - Moisture & Protection Mat ZCo SSM 45
 - Drainage element ZnCo Floradrain® FD 25
 - ZnCo Filter Sheet SF
 - Grauling Medium ZnCo Extensive, Depth 6-8 cm
 - Plant Material

Notes:
When the waterproofing is not root protected an additional root barrier ZnCo HEF 40 is required between the membrane and the protection mat.
This detail is particular for the ZnCo Green Roof system to use. The roof construction and the waterproofing are not specified as they can vary.

System	System	Title	System
ZnCo	System Green Roof	Flange with base perimeter	System
Flora	Flora	Flora	Flora
Flora	Flora	Flora	Flora
Flora	Flora	Flora	Flora

- Flashing
- Facade & Terrace Channel FR75
- Gravel Strip
- Separation element ZnCo TP 75
- System build-up:
 - Roof Surface
 - Waterproofing Membrane
 - Moisture & Protection Mat ZCo SSM 45
 - Drainage element Floradrain® FD 25
 - ZnCo Filter Sheet SF
 - Grauling Medium ZnCo Extensive, Depth 6-8 cm
 - Plant Material

Notes:
When the waterproofing is not root protected an additional root barrier ZnCo HEF 40 is required between the membrane and the protection mat.
This detail is particular for the ZnCo Green Roof system to use. The roof construction and the waterproofing are not specified as they can vary.

System	System	Title	System
ZnCo	System Green Roof	Wall connection with facade and terrace channel	System
Flora	Flora	Flora	Flora
Flora	Flora	Flora	Flora
Flora	Flora	Flora	Flora

- Flashing
- Gravel Strip
- Separation element ZnCo TP 75
- System build-up:
 - Roof Surface
 - Waterproofing Membrane
 - Moisture & Protection Mat ZCo SSM 45
 - Drainage element Floradrain® FD 25
 - ZnCo Filter Sheet SF
 - Grauling Medium ZnCo Extensive, Depth 6-8 cm
 - Plant Material

Notes:
When the waterproofing is not root protected an additional root barrier ZnCo HEF 40 is required between the membrane and the protection mat.
This detail is particular for the ZnCo Green Roof system to use. The roof construction and the waterproofing are not specified as they can vary.

System	System	Title	System
ZnCo	System Green Roof	Wall connection with gravel strip	System
Flora	Flora	Flora	Flora
Flora	Flora	Flora	Flora
Flora	Flora	Flora	Flora

- Sky Light
- Gravel Strip
- Separation element ZnCo TP 75
- System build-up:
 - Roof Surface
 - Waterproofing Membrane
 - Moisture & Protection Mat ZCo SSM 45
 - Drainage element ZnCo Floradrain®

Notes:
When the waterproofing is not root protected an additional root barrier ZnCo HEF 40 is required between the membrane and the protection mat.
This detail is particular for the ZnCo Green Roof system to use. The roof construction and the waterproofing are not specified as they can vary.
For Sedum Carpet PLUS an additional layer of 20 mm grading media is required.

System	System	Title	System
ZnCo	System Green Roof	Sky light with gravel strip on the protection	System
Flora	Flora	Flora	Flora
Flora	Flora	Flora	Flora
Flora	Flora	Flora	Flora

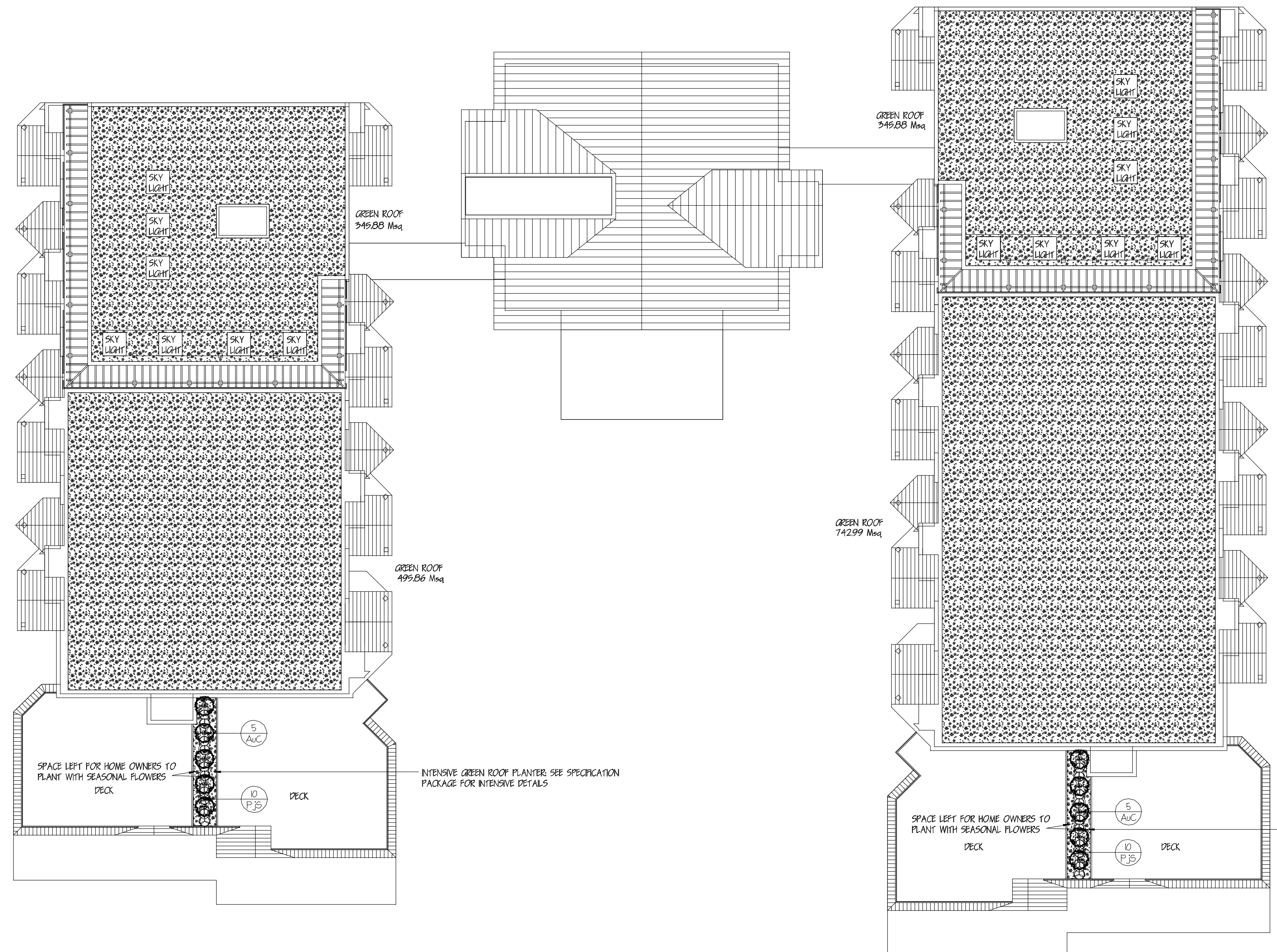
BC LANDSCAPE STANDARDS
All construction to meet the requirements as set out in the BC Standards 2007 edition, prepared by the B.C. Society of Landscape Architects and the B.C. Landscape and Nursery Association jointly.
Copies of the BC Landscape Standards are available through the BC LNA office at 1-604-574-7772
Refer to the attached Landscape Specifications provided with this plan, taken from the BC Landscape Standards.
Contractor to consult with designer regarding any discrepancies.
Contractor to consult with designer if plant substitutions are required due to availability.
Contractor is responsible for obtaining written confirmation of utility locations prior to commencing design.
Contractor is responsible for providing one year of maintenance and one year warranty on all materials and workmanship, from acceptance of landscape.

TOP SOIL REQUIREMENTS:
INTENSIVE PLANT DEPTH
Minimum depth for shrub beds: 450mm (18")
Minimum depth for mulch: 65-75mm (2.5-3")
EXTENSIVE PLANT DEPTH
Minimum depth for groundcover: 80mm (3")
GROUND LEVEL PLANT BED AREA = 1520 Msq
EXTENSIVE GREENROOF AREA = 1950.61 Msq
INTENSIVE BALCONY PLANTING AREA = 5512 Msq
TOTAL LANDSCAPE AREA = 3486.73 Msq

DRAWING:
GREEN ROOF LANDSCAPE PLAN
PROJECT:
CAMPBELL RIVER, BC
CLIENT:
ARCHITECT:

LANDSCAPE DESIGNER:
MYSTIC WOODS LANDSCAPE DESIGN
4757 Gordon Rd
Campbell River, B.C. V9H 1T3
phone: 250-286-1527
cell phone: 250-287-0160
design@mysticwoods.ca
DRAWN BY:
Corinne Matheson CLD, HT
Certified Landscape Designer,
& Horticultural Technician
Member of the BC LNA / CLNA

SCALE: 1:200
DATE: APRIL 24, 2009
REVISIONS: May 4, 2009 Roof layout change
DRAWING #
4 OF 4



EXTENSIVE ROOF TOP PLANT LEDGER
All or any combination of the following ground cover plants:
Arctostaphylos uva-ursi KUNNINGK
SIZE #5P5 - 9cm pot - spaced @ (45cm / 18") on center
Thymus praecox pseudolanuginosus WOOLY THYME
Thymus praecox Purple Carpet! PURPLE CARPET THYME
SIZE #5P5 - 9cm pot - spaced @ (30cm / 12") on center
Sedum 'Angelina' GOLDEN SEDUM
Sedum divergens OLD MANS BONES STONECROP
Sedum acre 'Aureum' GOLDEN SEDUM
Sedum album 'Mural' WHITE STONECROP
Sedum kamtschaticum RUSSIAN STONECROP
Sedum kamtschaticum variegatum VAREGATED RUSSIAN STONECROP
Sedum oregonum THICK LEAVED SEDUM
Sedum reflexum DONKEY TAIL SEDUM
Sedum spathulifolium 'Copa Blanca' SILVER LEAVED STONECROP
Sedum spurium 'John Creech' JOHN CREECH SEDUM
Sedum spurium 'Red Carpet!' RED CARPET STONECROP
Sedum spurium 'Roseum!' PINK STONECROP
SIZE: Either pre-grown Sedum Carpet mats, or plugs spaced at 16 plants per Msq
Water once thoroughly after planting is complete.
Thyme provides a walkable surface for roof maintenance.

PLANT LIST FOR DECK GARDENS

Key	Qty	Botanical Name	Common Name	Size/Condition
Shrubs				
A/C	10	Arbutus unedo 'Compacta'	COMPACT STRAWBERRY BUSH	# 5 pot
P/S	20	Platanus japonica 'Scarlet Ohara'	SCARLET OHARA PERIS	# 3 pot

FOLLOW SPECIFICATIONS FOR INTENSIVE ROOF TOP GARDENS FOR PATIO BEDS
AREA IN FRONT OF SHRUBS LEFT FOR OWNERS TO PLANT SEASONAL FLOWERS.

BC ONE CALL
Call Before
You Dig
1-800-474-6886
Cellular *6886

